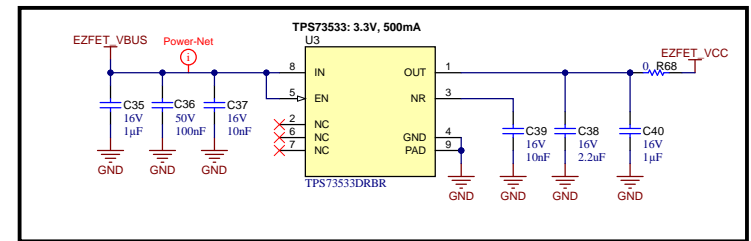
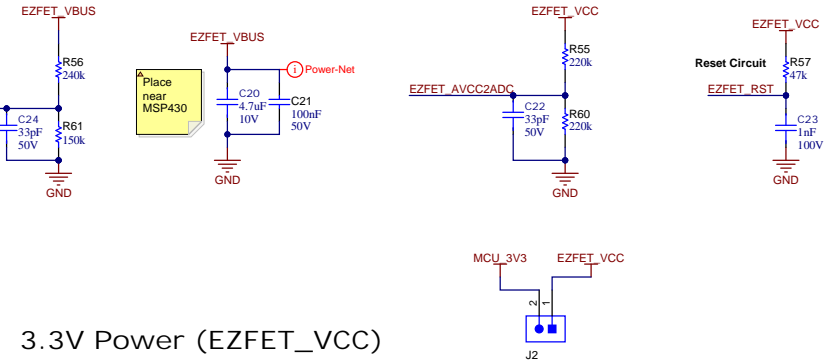
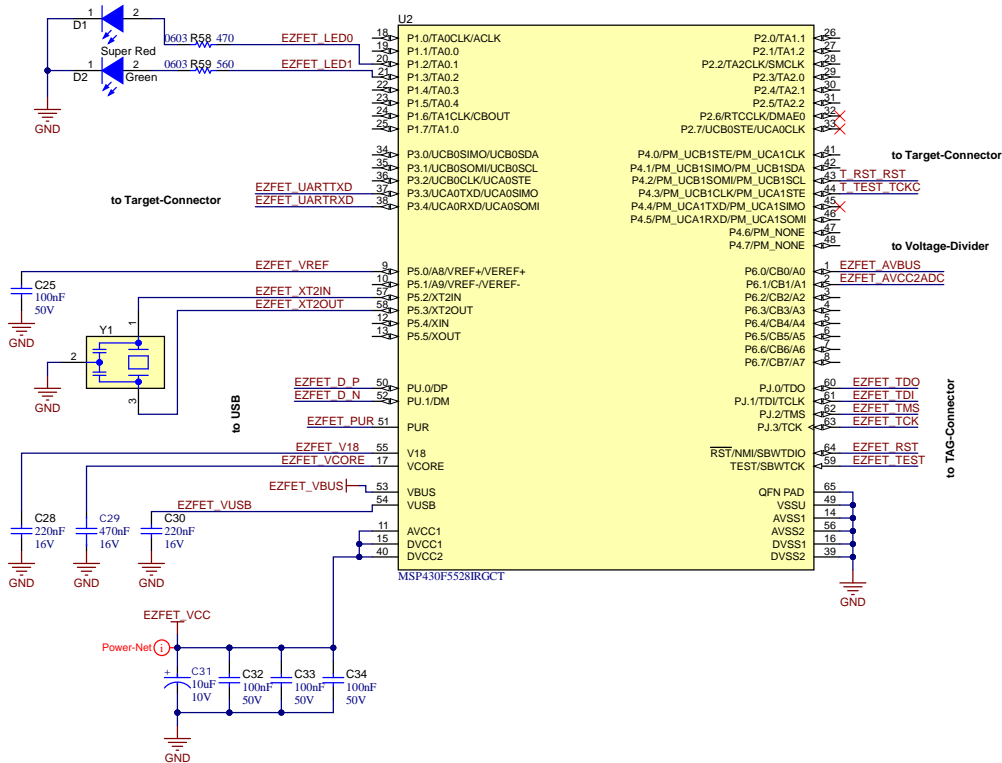
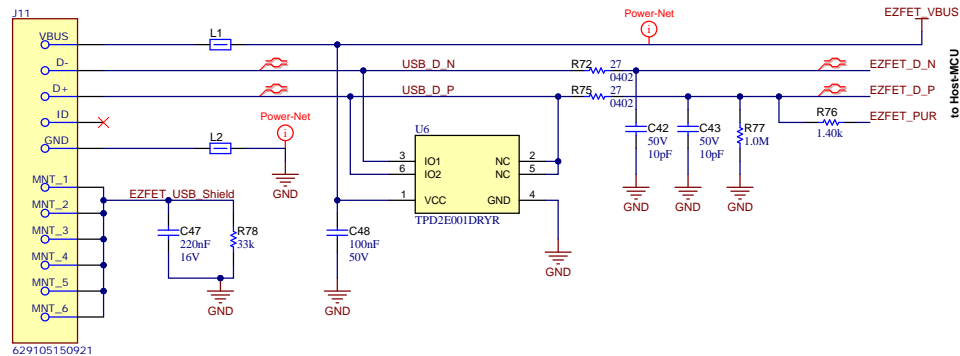


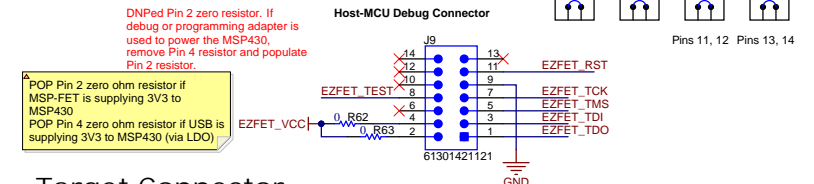
Host MCU for Emulation



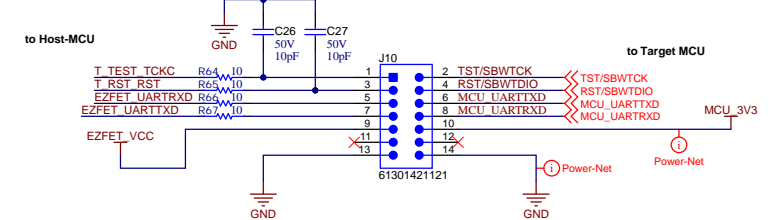
USB-I-Interface



JTAG-Connector (Host Debug)



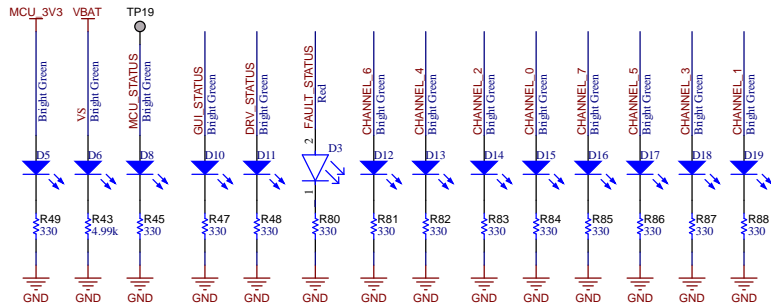
Target Connector



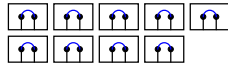
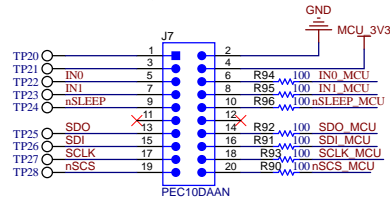
Texas Instruments and/or its licensors do not warrant the accuracy or completeness of this specification or any information contained therein. Texas Instruments and/or its licensors do not warrant that this design will meet the specifications, will be suitable for your application or fit for an implementation. Texas Instruments and/or its licensors do not warrant that the design is production worthy. You should completely validate and test your design implementation to confirm the system functionality for your application.

Orderable:	Designed for: Public Release	Mod. Date: 28-03-2024
TID #: N/A	Project Title: MD075	Sheet Title:
Number: MD-075	Rev: E1	Assembly Variant: [No Variations]
SVN Rev: Not in version control	File: MD075E1_ezFET_SchDoc	Sheet: 1 of 3
Drawn By: Murugavel Raju	Engineer: Audrey Kushler	Contact: http://www.ti.com/support

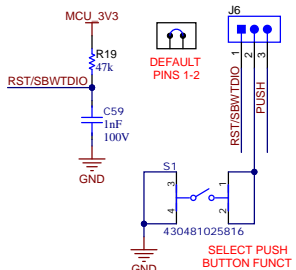
LEDS



Main Signal Header



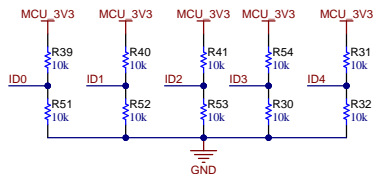
RST/PUSH Button



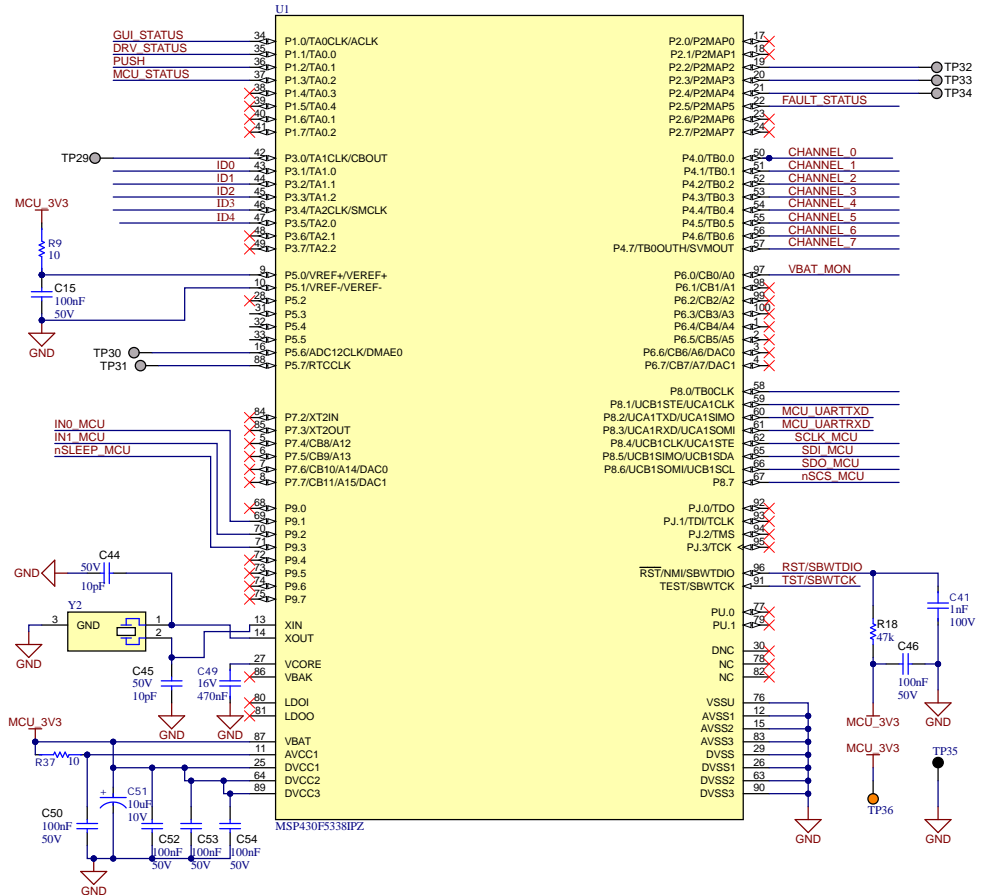
ID

The resistors on the ID[2:0] nets inform the firmware which device ID variant is on this board

Device	ID1	Type	ID3
DRV81008-Q1	0	Prerelease	0
DRV81004-Q1	1	Release	1
Just In Case	2		
Revision 1	3		
Revision 2	4		



MSP430

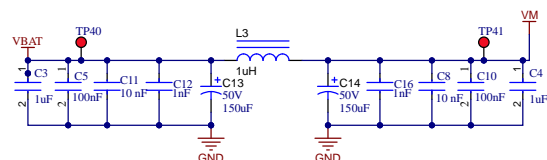
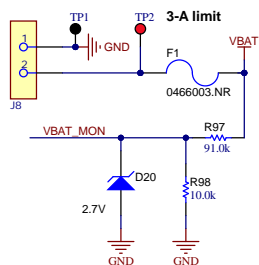


Orderable:	Designed for: Public Release	Mod. Date: 09-04-2024
TID #: N/A	Project Title: MD075	
Number: MD-075	Rev: E1	Sheet Title:
SVN Rev: Not in version control	Assembly Variant: [No Variations]	Sheet 2 of 3
Drawn By: Tilden Chen	File: MD075E1_MCU_SchDoc	Size: B
Engineer: Audrey Kuehler	Contact: http://www.ti.com/support	

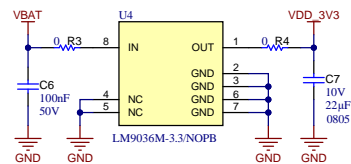
Texas Instruments and/or its licensors do not warrant the accuracy or completeness of this specification or any information contained therein. Texas Instruments and/or its licensors do not warrant that this design will meet the specifications, will be suitable for your application or fit for any particular purpose, or will operate in an implementation. Texas Instruments and/or its licensors do not warrant that the design is production worthy. You should completely validate and test your design implementation to confirm the system functionality for your application.

4.5 - 40V DC

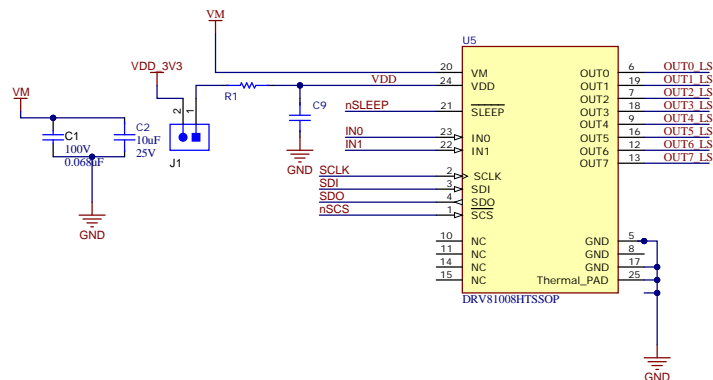
Board power



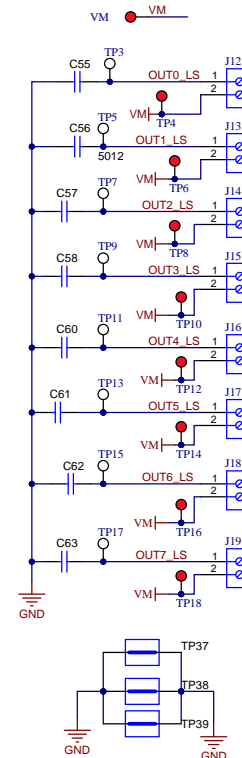
3.3V LDO



DRV81008-Q1



Output Connector



Texas Instruments and/or its licensors do not warrant the accuracy or completeness of this specification or any information contained therein. Texas Instruments and/or its licensors do not warrant that this design will meet the specifications, will be suitable for your application or fit for any particular purpose, or will operate in an implementation. Texas Instruments and/or its licensors do not warrant that the design is production worthy. You should completely validate and test your design implementation to confirm the system functionality for your application.

Orderable:	Designed for: Public Release	Mod. Date: 28-03-2024
TID #: N/A	Project Title: MD075	
Number: MD-075	Rev: E1	Sheet Title:
SVN Rev: Not in version control	Assembly Variant: [No Variations]	Sheet 2 of 3
Drawn By: Tilden Chen	File: MD075E1 - DRV81xxx.SchDoc	Size: B
Engineer: Audrey Kuehler	Contact: http://www.ti.com/support	

Board Stack Report